



HIGHLAND PARK RECREATION CENTER

SUMMER CAMP

LIMITED SPACE AVAILABLE

REGISTRATION STARTS
APRIL 10TH
9AM ONLINE & IN-PERSON

REGISTRATION FEE
\$25
Camp Shirt Included

Day Camp June 15th - August 7th
No Camp Friday, June 19th and Friday, July 3rd
Ages 5-12
4-day: \$165 (15 spots available per week, without field-trip, no camp on field-trip day)
5-day/field-trip: \$240 (42 Spaces Available per week)
CIT/field-trip: \$100 (5 Spots Available) - Ages 13-15



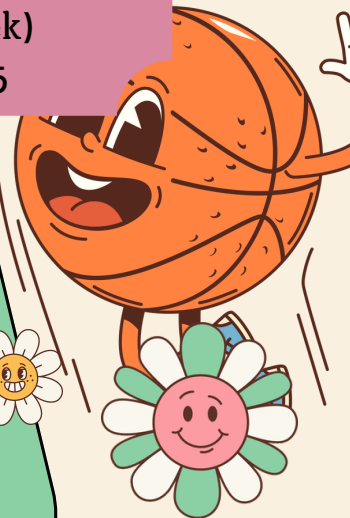
SCAN ME! =] for programs

LUNCH & SNACK PROVIDED!

CAMP HOURS:
8:00AM-6:00PM
EXTENDED CARE INCLUDED IN PRICE

ACTIVITIES

- WEEKLY THEMES
- ARTS & CRAFTS
- POOL & WATER ACTIVITIES
- CAMP SONGS
- FUN SPORTS
- GAMES



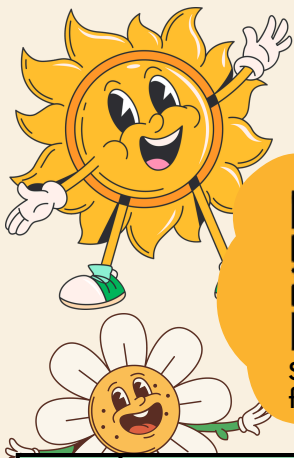
JUNE 15TH - AUGUST 7TH

PARENT ORIENTATION: WEDNESDAY MAY 27TH AT 6PM

ALL CLASSES AND PROGRAMS ARE SUBJECT TO CHANGE OR CANCELLATION. ALL REFUNDS WILL BE ASSESSED A 15% FEE.

IF YOU ARE A PERSON WITH A DISABILITY AND REQUIRE ACCOMMODATION TO PARTICIPATE IN A CITY OF LOS ANGELES DEPARTMENT OF RECREATION AND PARKS PROGRAM, SERVICE, OR ACTIVITY, REQUESTS MAY BE MADE BY CALLING THE FACILITY (213-847-4876), OR 711 FOR CA RELAY, TEN DAYS IN ADVANCE OF THE EVENT. WE WILL DO OUR BEST TO FULFILL REQUESTS WITH LESS THAN TEN BUSINESS DAYS' NOTICE.

IF A PARTICIPANT REQUIRES A ONE TO ONE AIDE, REQUESTS WILL BE FULFILLED WITHIN SEVEN BUSINESS DAYS OF RECEIVING REQUIRED PAPERWORK AND DOCUMENTATION NEEDED TO ISSUE A RIGHT OF ENTRY PERMIT TO THE AGENCY PROVIDING THE AIDE.



CITY OF LOS ANGELES- DEPARTMENT OF RECREATION AND PARKS
6150 PIEDMONT AVE., L.A., CA 90042 P: (213)847-4876
HIGHLANDPARK.RECREATIONCENTER@LACITY.ORG



SCAN ME! =]
for programs

HIGHLAND PARK RECREATION CENTER

AGES 5-12

SUMMER

SPACE IS LIMITED

Week	Dates	Field Trip (Wednesday)	Theme	Full 5-Day Week (Field-Trip Included) (42 Spots Available)	Lunch & Souvenir Money Suggestion	4 Days (15 Spots Available, No Field-Trip)	CIT (5 Spots Available)
1	June 15 - June 19 (Closed on Friday, June 19th)	Walking Field Trip Baskin Robbins (6/17/26)	Candyland	\$165 (4-Day Week)	\$10	\$165	\$100
2	June 22 - June 26	Underwood Family Farms (6/24/26)	Barnyard Bash	\$240	Bring Bag Lunch	\$165	\$100
3	June 29 - July 3 (Closed on Friday, July 3rd)	Walking Field Trip Baskin Robbins (7/01/26)	Marvel / DC Multiverse	\$165 (4-Day Week)	\$10	\$165	\$100
4	July 6 - July 10	Knott's Berry Farm (7/08/26)	The Wild, Wild, West	\$240	Lunch Included	\$165	\$100
5	July 13 - July 17	AMC Movie & Funbox (7/15/26)	Toy Story	\$240	\$30	\$165	\$100
6	July 20 - July 24	California Science Center (7/22/26)	Mad Science	\$240	Bring Lunch or \$30	\$165	\$100
7	July 27 - July 31	John's Incredible Pizza (7/29/26)	Teenage Mutant Ninja Turtles	\$240	Included	\$165	\$100
8	August 3 - August 7	Splash Water Park (8/05/26)	Pirates & Mermaids	\$240	\$30	\$165	\$100

JUNE 15TH - AUGUST 7TH

PARENT ORIENTATION: WEDNESDAY MAY 27TH AT 6PM

ALL CLASSES AND PROGRAMS ARE SUBJECT TO CHANGE OR CANCELLATION. ALL REFUNDS WILL BE ASSESSED A 15% FEE.
 IF YOU ARE A PERSON WITH A DISABILITY AND REQUIRE ACCOMMODATION TO PARTICIPATE IN A CITY OF LOS ANGELES DEPARTMENT OF RECREATION AND PARKS PROGRAM, SERVICE OR ACTIVITY, REQUESTS MAY BE MADE BY CALLING THE FACILITY (213-847-4876), OR 711 FOR CA RELAY. TEN DAYS IN ADVANCE OF THE EVENT. WE WILL DO OUR BEST TO FULFILL REQUESTS WITH LESS THAN TEN BUSINESS DAYS' NOTICE.

IF A PARTICIPANT REQUIRES A ONE TO ONE AIDE, REQUESTS WILL BE FULFILLED WITHIN SEVEN BUSINESS DAYS OF RECEIVING REQUIRED PAPERWORK AND DOCUMENTATION NEEDED TO ISSUE A RIGHT OF ENTRY PERMIT TO THE AGENCY PROVIDING THE AIDE.