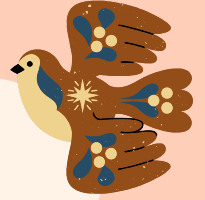




City of Los Angeles Department of Recreation and Parks
Silver Lake Recreation Center

1850 W. Silver Lake Drive
Los Angeles, CA 90026
(323) 644-3946
silverlake.recreationcenter@lacity.org



LITTLE EXPLORERS

Spring 2026



\$90
FOR
6 SESSIONS

**AGES 12-36
MONTHS**

Registration begins
March 9th 2026



@SILVERLAKERCLA

FOLLOW US

MONDAYS

11:00 AM- 12:00 PM

APRIL 6TH- MAY 11TH 2026

this class is for parents and toddlers,
welcoming caregivers and grandparents.

The 6 session class combines sensory
play, music, arts, and games for a fun and
educational experience.

Silver Lake Recreation Center reserves the right to cancel, change, or substitute programs or activities listed on this flyer. There will be no refunds after the program start date. A 15% administrative fee will be deducted from all approved refunds. If you are a person with a disability and require accommodation to participate in a City of Los Angeles Department of Recreation and Parks program, service, or activity, requests may be made by calling the facility 323-644-3946, or 711 for CA Relay, ten days in advance of the event. We will do our best to fulfill requests with less than ten business days' notice. If a participant requires a one to one aide, requests will be fulfilled within seven business days of receiving required paperwork and documentation needed to issue a Right of Entry Permit to the agency providing the aide.