



CITY OF LOS ANGELES DEPARTMENT OF RECREATION AND PARKS
 SOUTH SEAS HOUSE RECREATION CENTER
 2301 W 24TH ST., LOS ANGELES, CA 90018 | 323.373.9483 | RAP.SOUTHSEASHOUSE@LACITY.ORG



COUNSELOR IN TRAINING CAMP

COST: ~~\$180~~ \$50 PER WEEK/PER CHILD (PLUS AN ANNUAL \$25 REGISTRATION FEE)

PROGRAM AGES: 13-17 YEARS OLD

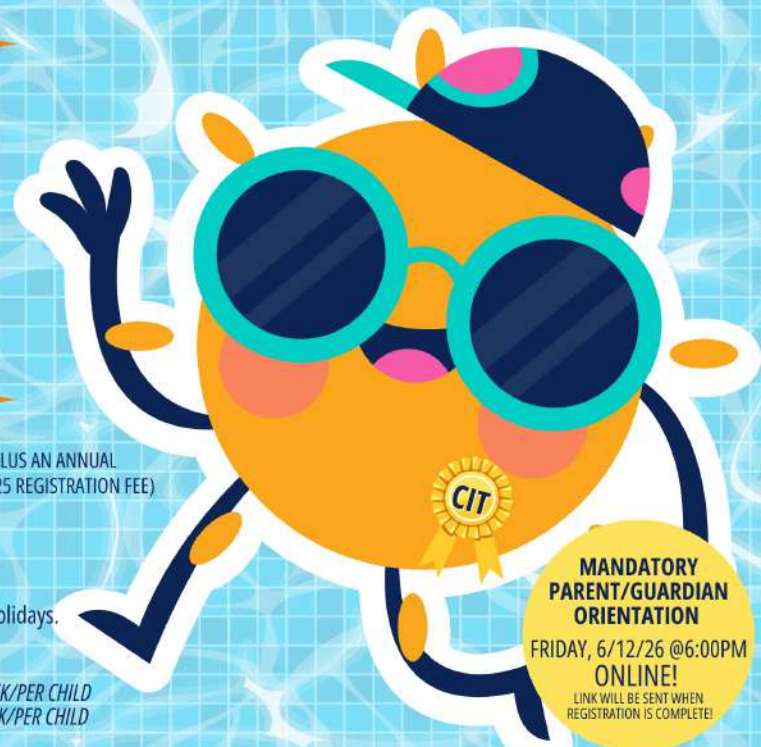
DATES: JUNE 15, 2026-AUGUST 7, 2026

We will be CLOSED on Friday, June 19, 2026 and on Friday, July 3, 2026 for City Observed Holidays.

PROGRAM HOURS: 9:00AM-5:00PM*

*AM EXTENDED CARE IS AVAILABLE FROM 7:30AM-8:30AM FOR AN ADDITIONAL \$10 PER WEEK/PER CHILD

*PM EXTENDED CARE IS AVAILABLE FROM 5:00PM-6:00PM FOR AN ADDITIONAL \$10 PER WEEK/PER CHILD



**MANDATORY
 PARENT/GUARDIAN
 ORIENTATION**

FRIDAY, 6/12/26 @6:00PM
 ONLINE!

LINK WILL BE SENT WHEN
 REGISTRATION IS COMPLETE!



JOIN US FOR A SUMMER FULL OF FUN AT THE SOUTH SEAS HOUSE RECREATION CENTER!
 BE PART OF OUR SUMMER CAMP AND COME READY FOR EIGHT WEEKS OF STEAM ACTIVITIES,
 SPORTS, SWIMMING AND ACTIVE PLAY FOR YOUNG PEOPLE AGES: 5-12!

\$50 PER WEEK, INCLUDES FIELD TRIP* (*IF YOU NEED FINANCIAL ASSISTANCE, A LOWER PRICE MAY BE AVAILABLE WITH INCOME VERIFICATION. SEE STAFF FOR DETAILS.)

REGISTRATION OPENS APRIL 6, 2026 @9:00AM! LIMITED SPACE IS AVAILABLE!

ALL PROGRAMS ARE SUBJECT TO CHANGE OR CANCELLATION. ACHIEVING GENDER EQUALITY THROUGH A CONTINUOUS COMMITMENT TO GIRLS AND WOMEN IN SPORTS. PROGRAMS ARE OFFERED ON A FIRST-COME, FIRST-SERVED BASIS. IF YOU ARE A PERSON WITH A DISABILITY AND REQUIRE ACCOMMODATION TO PARTICIPATE, VIA CITY OF LOS ANGELES DEPARTMENT OF RECREATION AND PARKS PROGRAM, SERVICES OR ACTIVITY, REQUESTS MAY BE MADE BY CALLING THE FACILITY (323) 373-9483 OR 711 FOR OR RELAY, TEN DAYS IN ADVANCE OF THE EVENT. WE WILL DO OUR BEST TO FULFILL REQUESTS WITH LESS THAN TEN BUSINESS DAYS' NOTICE. IF A PARTICIPANT REQUIRES A ONE TO ONE AIDE, REQUESTS WILL BE FULFILLED WITHIN SEVEN BUSINESS DAYS OF RECEIVING REQUIRED PAPERWORK AND DOCUMENTATION NEEDED TO ISSUE A RIGHT OF ENTRY PERMIT TO THE AGENCY PROVIDING THE AIDE. PROGRAMS AND CLASSES ARE SUBJECT TO CHANGE OR CANCELLATION WITHOUT NOTICE. NO REFUNDS WILL BE ISSUED UNLESS THE PROGRAM IS CANCELLED BY THE RECREATION CENTER.