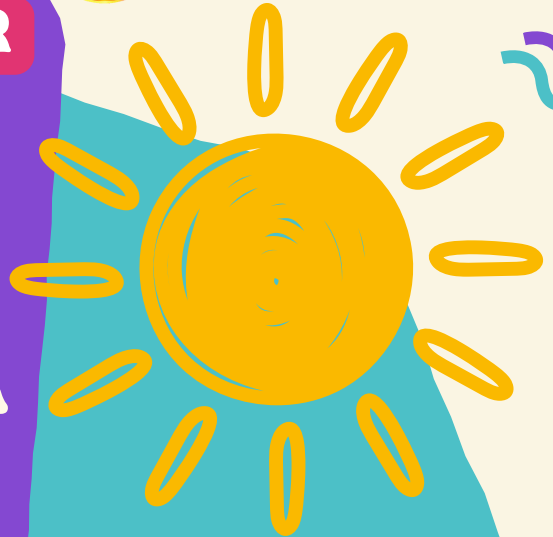




**YOSEMITE  
RECREATION CENTER**

**TINKER  
SUMMER  
CAMP**



**2026**

**AGES 3-5**

**CAMPER MUST BE POTTY TRAINED**



**Registration Fee: \$35**  
**Session 1: June 15-July 9**  
**Session 2: July 13-August 6**  
**Camp Days:**  
**Monday-Thursday**  
**Camp Hours:**  
**9am-12pm**

**REGISTRATION  
OPENS APRIL 10 AT  
11AM ONLINE**



**OUR  
PROGRAM**

- Developmentally appropriate curriculum
- Play-based learning
- Outdoor play
- Lunch is not provided

**FEE**  
**\$285**  
**PER SESSION**



1. IF YOU ARE A PERSON WITH A DISABILITY AND REQUIRE ACCOMMODATION TO PARTICIPATE IN A CITY OF LOS ANGELES DEPARTMENT OF RECREATION AND PARKS PROGRAM, SERVICE, OR ACTIVITY, REQUESTS MAY BE MADE BY CALLING THE FACILITY 323-257-1644, OR 711 FOR CA RELAY, TEN DAYS IN ADVANCE OF THE EVENT. WE WILL DO OUR BEST TO FULFILL REQUESTS WITH LESS THAN TEN BUSINESS DAYS' NOTICE.
2. IF A PARTICIPANT REQUIRES A ONE TO ONE AIDE, REQUESTS WILL BE FULFILLED WITHIN SEVEN BUSINESS DAYS OF RECEIVING REQUIRED PAPERWORK AND DOCUMENTATION NEEDED TO ISSUE A RIGHT OF ENTRY PERMIT TO THE AGENCY PROVIDING THE AIDE.
3. PROGRAMS AND CLASSES ARE SUBJECT TO CHANGE OR CANCELLATION WITHOUT NOTICE.



**CALL: 323-257-1644**

**1840 YOSEMITE DRIVE, LA 90041**  
**YOSEMITEPARK.RECREATIONCENTER@LACITY.ORG**